

# TECHNICAL FOAMS

---

## Protect & sustain

Discover the high-performance technical foams from Abriso Jiffy



[abrisojiffy.com](http://abrisojiffy.com)

**ABRISO**  

WE CREATE. WE SUSTAIN. WE PROTECT.

# THE EXPERTS IN TECHNICAL FOAMS

If your products are fragile and delicate they need perfect protection to keep them free from damage. We have a range of polyethylene foams which come in different densities and have a variety of properties to keep virtually anything safe.

Whether it's critical they provide protection from impact damage, moisture or temperature, we've got it covered. And, as there's nothing more important to keep protected than the planet, all our foams are 100% recyclable.

## WHY CHOOSE US FOR YOUR TECHNICAL FOAM?

As longstanding market leaders, we never make our customers choose between quality and price. That's why we work hard to deliver on both fronts. And with our market-beating range, Europe-wide sites and commitment to sustainability, we're perfectly placed to bring you whatever you need, however you want.



| PRICE & QUALITY   | FLEXIBILITY   | SUSTAINABILITY   | PORTFOLIO  |
|---|---|--|--|
|   |   |  |  |
| Why compromise? We bring the best quality products and competitive prices | 17 Europe-wide sites for total flexibility, local delivery and small quantity/specialist orders | Industry-leading, state-of-the-art recycling capabilities. Commitment to reusing ALL of your waste through our 'Renew' programme | The broadest portfolio in the industry, offering you everything you need |



# SUSTAINABLE & RESPONSIBLE

---

## Recycle

All of our products are 100% recyclable.

## Re-use

100% of our production waste is reused.

## Reduce

Closed-loop processes reduce virgin material usage.

## Rethink

Developing new technologies to limit any environmental impact.

# CERTIFIED REASSURANCE

If having 17 sites across Europe doesn't put your mind at ease that you're partnering with the leader in non-cross linked technical foams, then rest assured that Abriso Jiffy is also fully certified, company-wide.

We have our own Centre of Excellence in Poland where the full range of testing is carried out.

We also hold certifications including:

- ✓ ISCC
- ✓ ISO-9001
- ✓ A+ ratings across all products
- ✓ RecyClass Recycling Process
- ✓ RecyClass Product – 80%



# POLYLAM®

POLYLAM® products are built-up of non-cross linked laminated layers of polyethylene foam. The structure of the closed cells provides excellent protection against multiple shocks and impacts. POLYLAM® enables easy conversion to various shapes for ready-to-use packaging.



Min 30% recycled

## PROPERTIES

- Non-cross-linked foam structure can be recycled back to a raw material multiple times
- Provides shock absorption for both light and heavy products in short or long distribution cycles
- An environmental alternative for polyurethane
- 100% recyclable
- Odour-free
- Outstanding creep performance over time
- Does not contain heavy metals
- CFC free hence no negative effect on the environment

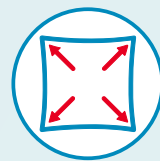


## SPECIFICATIONS

Standard Stock POLYLAM® planks  
1200 mm (Width) x 2000 mm (Length)

|     | DENSITY (KG/M <sup>3</sup> ) | THICKNESS (MM) | COLOUR                   |
|-----|------------------------------|----------------|--------------------------|
| ULD | 18                           | 20-100         | White                    |
| LD  | 23                           | 20-100         | White, Antistatic, Black |
| MD  | 28                           | 20-100         | White, Antistatic, Black |
| HD  | 35                           | 20-100         | White, Antistatic, Black |
| UHD | 65                           | 20-100         | White, Antistatic, Black |
| HDS | 100                          | 20-70          | White                    |

Non-standard sizes available on request to improve yields



Flexible plank sizes



Recyclable



Cost effective

# NOPAPLANK®

Made of a single-layer, closed-cell, high-performing, polyethylene foam that can be cut or die-pressed into countless three-dimensional shock-absorbent products. The unique structure of this eco-friendly plank gives you unbeatable shock resistance for repeated drops.



Min 30% recycled

## BENEFITS

- Reusable
- CFC-free
- Extremely pressure resistant
- Lightweight
- Moisture-resistant
- Easy to cut, saw, laminate, weld or mill
- Superior creep performance



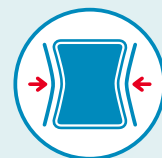
## SPECIFICATIONS

Standard Stock NOPAPLANK®  
600 mm (Width) x 2750 mm (Length)\*

|     | DENSITY (KG/M <sup>3</sup> ) | THICKNESS (MM) | COLOUR       |
|-----|------------------------------|----------------|--------------|
| MD  | 28                           | 50             | White        |
| MD  | 28                           | 60             | White        |
| MD  | 28                           | 80             | White        |
| HD  | 35                           | 50             | White        |
| HD  | 35                           | 60             | White        |
| HD  | 35                           | 70             | White        |
| HD  | 35                           | 80             | White        |
| HD  | 35                           | 100            | White        |
| HD  | 35                           | 50             | Black        |
| HD  | 35                           | 100            | Black        |
| HD  | 35                           | 50             | Anti-Static  |
| UHD | 65                           | 50             | White, Black |
| UHD | 65                           | 60             | White, Black |
| UHD | 65                           | 70             | White, Black |
| HDS | 100                          | 50             | White, Black |
| HDS | 100                          | 60             | White, Black |
| HDS | 100                          | 70             | White, Black |



Outstanding performance and cushioning



Superior Creep performance



Premium Level

\* Other sizes available on request

# NOPAPLANK® XL

Boasting the same outstanding performance as NOPAPLANK®, NOPAPLANK® XL is available in larger sheet sizes up to 1200 mm wide.



## BENEFITS

- NOPAPLANK® XL size – 50 mm-100 mm x 1200 mm x 2000 mm or 2750 mm lengths
- Increased efficiency with sheet size produced to fit specific requirements



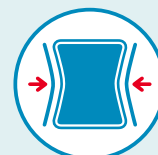
## SPECIFICATIONS

Standard Stock NOPAPLANK® XL  
1200 mm (Width) x 2000 mm (Length)  
1200mm (Width) x 2750 mm (Length)

|    | DENSITY (KG/M <sup>3</sup> ) | THICKNESS (MM) | COLOUR | PACK QTY |
|----|------------------------------|----------------|--------|----------|
| HD | 35                           | 50             | White  | 8        |
| HD | 35                           | 100            | White  | 4        |



Outstanding performance and cushioning



Superior Creep performance



Premium Level

# NOPA SMART®

NOPA SMART® is characterised by its highly flexible and delicate cell structure, making it perfect for milling or cutting with a plotter.

NOPA SMART® has a fine-cellular structure which provides a soft finish and ensures both a perfect cutting line during converting and also the stability of the final shape, making it perfect for representation applications.

As an alternative to cross-linked foam it is environmentally friendly because it's 100% recyclable.



## BENEFITS

- Premium look and feel due to fine cell structure
- Re-usable & recyclable
- CFC-free
- Fine cell structure gives soft feel
- Lightweight
- Moisture-resistant
- Space-saving packaging
- Easy to cut, saw, laminate, weld or mill
- Can be laminated for multi-coloured presentation applications



## SPECIFICATIONS

Standard Stock NOPA SMART®  
600 mm (Width) x 2750 mm (Length)\*

NOPA SMART® XL  
1000 mm (Width) x 2000 mm (Length)

|    | DENSITY (KG/M <sup>3</sup> ) | THICKNESS (MM) | COLOUR              | PACK QTY |
|----|------------------------------|----------------|---------------------|----------|
| HD | 35                           | 50             | Black, Blue, White* | 8        |
| HD | 35                           | 100            | Black, Blue White*  | 4        |

\* Other colours and sizes available on request



Recyclable



Soft feel

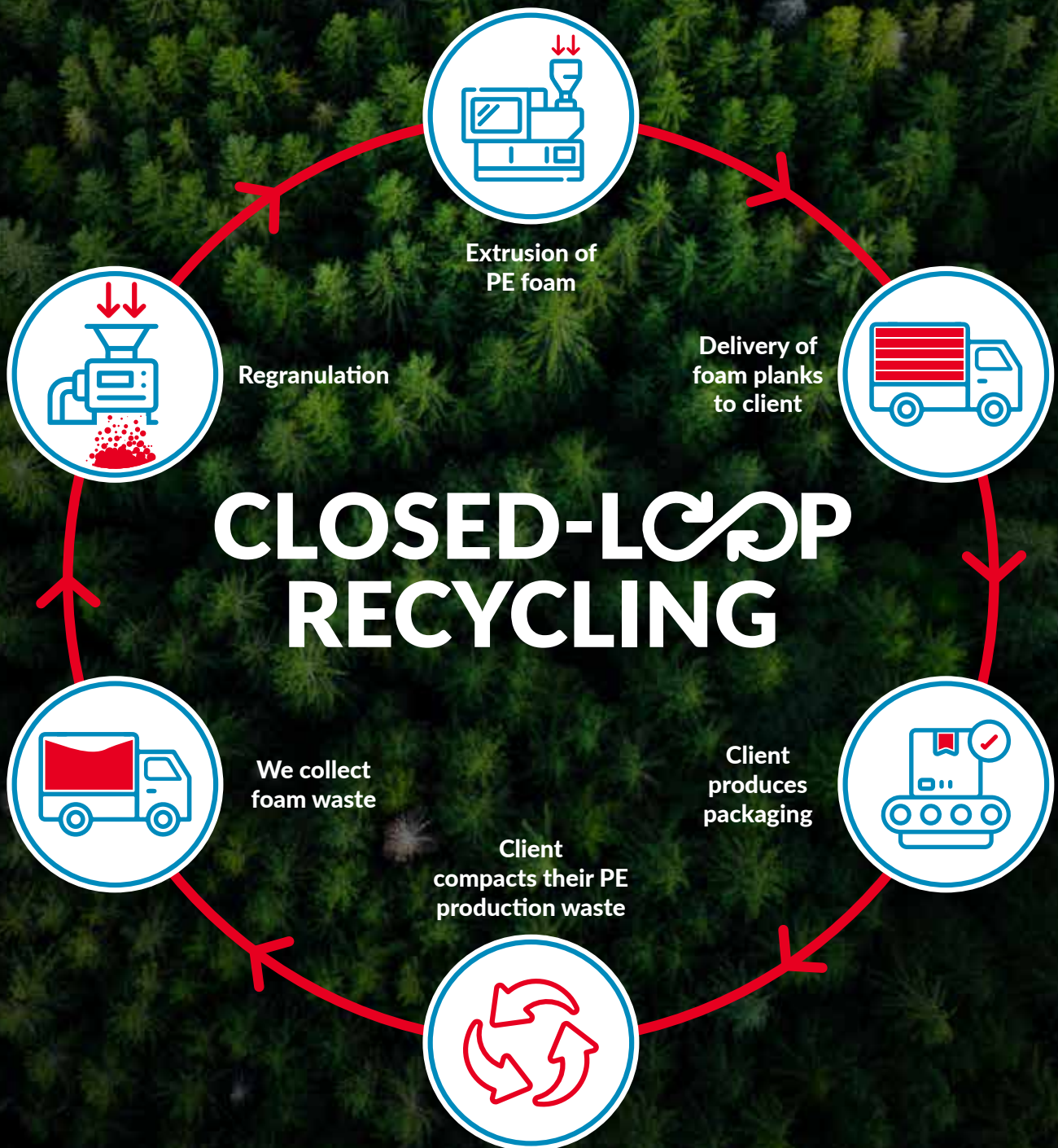


Premium Level



# RENEW TECHNICAL FOAMS

Our Abriso Jiffy Renew range offers 80% recycled content. We achieve this by working with our partners and customers via collecting Foam waste created within their manufacture process.



# RENEW FOAMS



Min 80% recycled

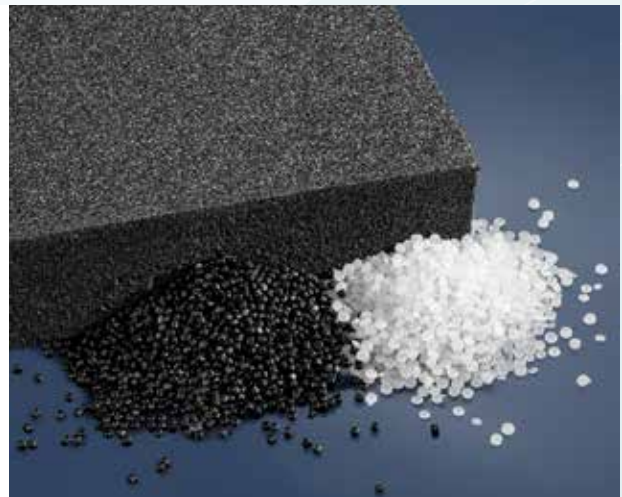


RENEW products are our recycled-content versions of technical foams. Produced to provide the highest standards of sustainability and protect the environment, RENEW planks are available as laminated POLYLAM® but also extruded/solid NOPAPLANK®.

RENEW products contain at least **80%** recycled contents using waste products from our own manufacturing processes. Not only that, but we also buy and collect PE production waste from our clients meaning we are able to deliver a truck load of finished goods and collect compacted or regrained waste with the same truck.

## BENEFITS

- Outstanding performance properties
- Easy to convert
- Shock and vibration absorbency
- Environmentally friendly option for PE foams
- Broad range of available densities



## SPECIFICATIONS

### POLYLAM® RENEW

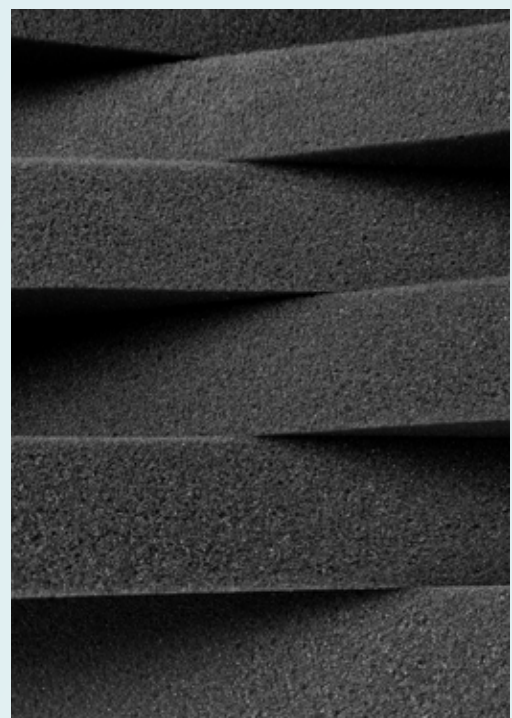
1200 mm (Width) x 2000 mm (Length)

|     | DENSITY (KG/M <sup>3</sup> ) |
|-----|------------------------------|
| LD  | 23                           |
| MD  | 28                           |
| HD  | 35                           |
| UHD | 65                           |

### NOPAPLANK® RENEW

600 mm (Width) x 2750 mm (Length)

|     | DENSITY (KG/M <sup>3</sup> ) |
|-----|------------------------------|
| MD  | 28                           |
| HD  | 35                           |
| UHD | 65                           |





# RESEARCH & DEVELOPMENT CENTRE

---

At Abriso Jiffy, our goal is to provide customers with a deep breadth of high quality, superior protective packaging solutions while remaining on the forefront of R&D and technology. We strive to continually bring new, innovative protective packaging offerings to the marketplace and are committed to promoting business practices that respect both the earth and the environment.

With more than 50 years experience in extruded polyethylene (PE), polypropylene (PP) and polystyrene (PS), and as supplier of the most diverse range of protective packaging and insulation products in Europe, we have the expertise to find the perfect match between our product characteristics and your specific requirements.

# POLYLAM®



| Property             | Test method                |                     | Unit                  |   | ULD | LD   | MD  | HD  | UHD | HDS |
|----------------------|----------------------------|---------------------|-----------------------|---|-----|------|-----|-----|-----|-----|
| Density              | EN ISO 845<br>ASTM D3575 W |                     | kg/<br>m <sup>3</sup> |   | 18  | 23   | 28  | 35  | 65  | 100 |
| Compression strength | EN ISO 3386-1              | 1 impression 10%    | kPa                   | > |     | 15   | 23  | 30  | 45  | 74  |
|                      | ASTM D-3575 D              | 1 impression 25%    | kPa                   | > |     | 36   | 45  | 55  | 76  | 131 |
|                      | DIN 53577                  | 1 impression 50%    | kPa                   | > |     | 95   | 110 | 128 | 150 | 237 |
|                      |                            | 1 impression 70%    | kPa                   | > |     | 180  | 210 | 250 | 310 | 515 |
|                      |                            | 4 impression 25%    | kPa                   | > |     | 15   | 26  | 28  | 38  | 97  |
|                      |                            | 4 impression 50%    | kPa                   | > |     | 60   | 75  | 95  | 112 | 194 |
|                      |                            | 4 impression 70%    | kPa                   | > |     | 150  | 180 | 210 | 260 | 483 |
| Tensile strength     | EN ISO 1798                | Extrusion Direction | kPa                   | > |     | 165  | 180 | 200 | 360 | 480 |
|                      | ASTM D3575 T               | Cross Direction     | kPa                   | > |     | 120  | 130 | 145 | 280 | 320 |
| Compression creep    | ISO 7850                   | *168h               | %                     | < |     | 5    | 5   | 5   | 5   | 5   |
|                      | ASTM D3575 BB              | *1000h              | %                     | < |     | 10   | 10  | 10  | 10  | 10  |
|                      |                            | Load                | psi                   |   |     | 1.25 | 1.5 | 2   | 5   | 10  |



| Property             | Test method                |                     | Unit                  |   | LD  | MD  | HD  | UHD |
|----------------------|----------------------------|---------------------|-----------------------|---|-----|-----|-----|-----|
| Density              | EN ISO 845<br>ASTM D3575 W |                     | kg/<br>m <sup>3</sup> |   | 23  | 28  | 35  | 65  |
| Compression strength | EN ISO 3386-1              | 1 impression 10%    | kPa                   | > | 13  | 22  | 25  | 35  |
|                      | ASTM D-3575 D              | 1 impression 25%    | kPa                   | > | 28  | 37  | 46  | 65  |
|                      | DIN 53577                  | 1 impression 50%    | kPa                   | > | 80  | 90  | 115 | 130 |
|                      |                            | 1 impression 70%    | kPa                   | > | 160 | 175 | 225 | 240 |
|                      |                            | 4 impression 25%    | kPa                   | > | 15  | 25  | 28  | 45  |
|                      |                            | 4 impression 50%    | kPa                   | > | 50  | 70  | 90  | 110 |
|                      |                            | 4 impression 70%    | kPa                   | > | 140 | 160 | 208 | 220 |
| Tensile strength     | EN ISO 1798                | Extrusion Direction | kPa                   | > | 130 | 150 | 170 | 210 |
|                      | ASTM D3575 T               | Cross Direction     | kPa                   | > | 90  | 110 | 130 | 170 |
| Compression creep    | ISO 7850                   | *168h               | %                     | < | 5   | 5   | 5   | 5   |
|                      | ASTM D3575 BB              | *1000h              | %                     | < | 10  | 10  | 10  | 10  |

# NOPAPLANK®



## NOPAPLANK®

| Property             | Test method                |                     | Unit                  |   | MD  | HD  | UHD | HDS |
|----------------------|----------------------------|---------------------|-----------------------|---|-----|-----|-----|-----|
| Density              | EN ISO 845<br>ASTM D3575 W |                     | kg/<br>m <sup>3</sup> |   | 28  | 35  | 65  | 100 |
| Compression strength | EN ISO 3386-1              | 1 impression 10%    | kPa                   | > | 32  | 36  | 65  | 97  |
|                      | ASTM D-3575 D              | 1 impression 25%    | kPa                   | > | 55  | 62  | 100 | 191 |
|                      | DIN 53577                  | 1 impression 50%    | kPa                   | > | 110 | 147 | 182 | 292 |
|                      |                            | 1 impression 70%    | kPa                   | > | 220 | 270 | 320 | 570 |
|                      |                            | 4 impression 25%    | kPa                   | > | 30  | 35  | 40  | 35  |
|                      |                            | 4 impression 50%    | kPa                   | > | 85  | 102 | 115 | 168 |
|                      |                            | 4 impression 70%    | kPa                   | > | 205 | 225 | 280 | 490 |
| Tensile strength     | EN ISO 1798                | Extrusion Direction | kPa                   | > | 170 | 195 | 320 | 460 |
|                      | ASTM D3575 T               | Cross Direction     | kPa                   | > | 130 | 145 | 180 | 290 |
| Compression creep    | ISO 7850                   | *168h               | %                     | < | 5   | 5   | 5   | 5   |
|                      | ASTM D3575 BB              | *1000h              | %                     | < | 10  | 10  | 10  | 10  |



## NOPAPLANK® RENEW

## NOPA SMART®

| Property             | Test method                |                     | Unit                  |   | MD  | HD  | UHD | HD  |
|----------------------|----------------------------|---------------------|-----------------------|---|-----|-----|-----|-----|
| Density              | EN ISO 845<br>ASTM D3575 W |                     | kg/<br>m <sup>3</sup> |   | 28  | 35  | 65  | 35  |
| Compression strength | EN ISO 3386-1              | 1 impression 10%    | kPa                   | > | 20  | 30  | 60  | 38  |
|                      | ASTM D-3575 D              | 1 impression 25%    | kPa                   | > | 40  | 60  | 90  | 68  |
|                      | DIN 53577                  | 1 impression 50%    | kPa                   | > | 110 | 120 | 150 | 120 |
|                      |                            | 1 impression 70%    | kPa                   | > | 200 | 230 | 280 | 230 |
|                      |                            | 4 impression 25%    | kPa                   | > | 30  | 40  | 40  | 25  |
|                      |                            | 4 impression 50%    | kPa                   | > | 90  | 100 | 100 | 90  |
|                      |                            | 4 impression 70%    | kPa                   | > | 180 | 210 | 260 | 210 |
| Tensile strength     | EN ISO 1798                | Extrusion Direction | kPa                   | > | 150 | 170 | 280 | 190 |
|                      | ASTM D3575 T               | Cross Direction     | kPa                   | > | 110 | 130 | 150 | 140 |
| Compression creep    | ISO 7850                   | *168h               | %                     | < | 5   | 5   | 5   | 5   |
|                      | ASTM D3575 BB              | *1000h              | %                     | < | 10  | 10  | 10  | 10  |



**UNITED KINGDOM**



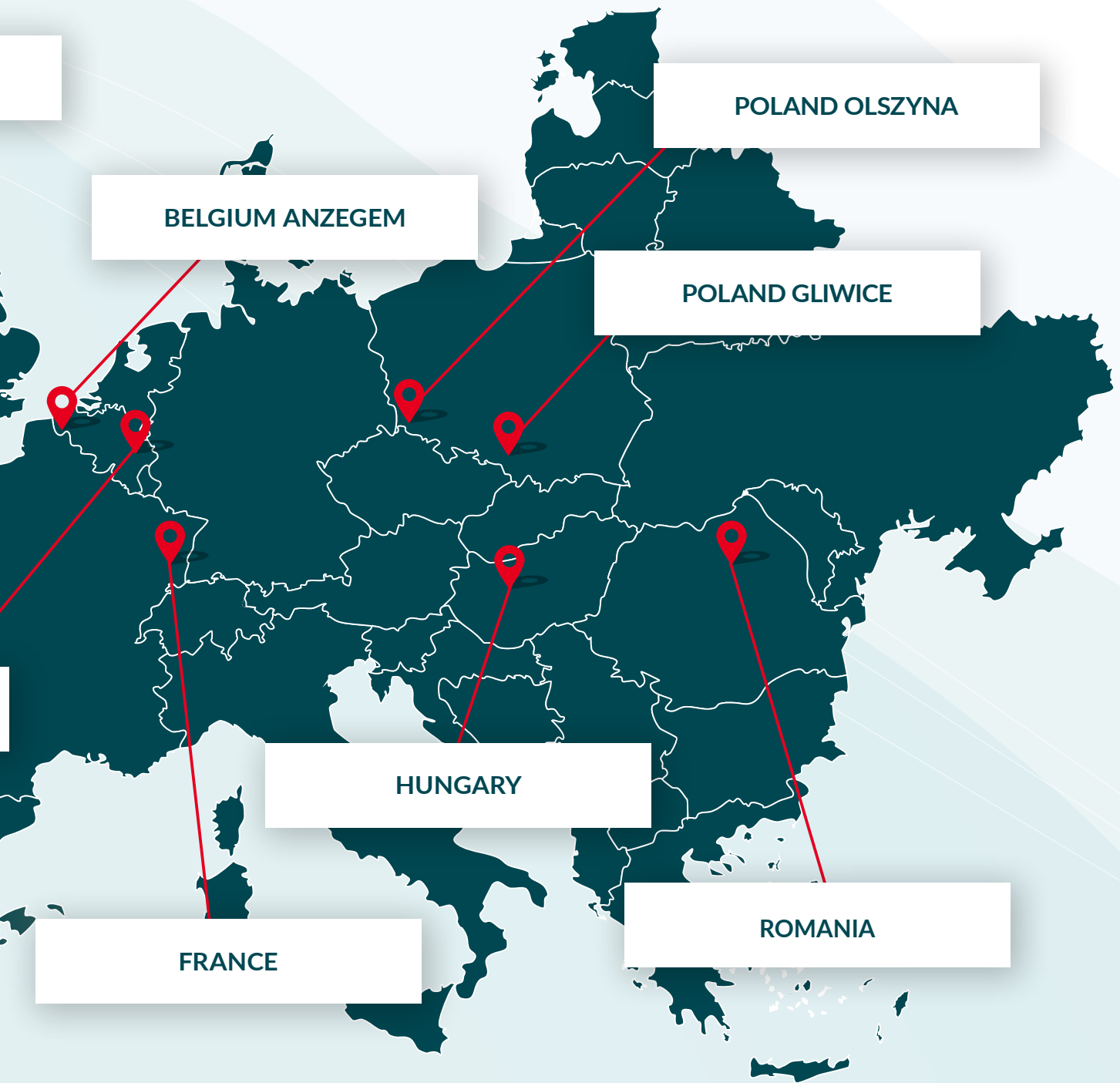
**IRELAND**

**BELGIUM WELLEN**



READY TO HELP THROUGHOUT EUROPE

---





WE CREATE. WE SUSTAIN. WE PROTECT.



TALK TO OUR TEAM TODAY

[technicalfoams@abrisojiffy.com](mailto:technicalfoams@abrisojiffy.com)

[abrisojiffy.com](http://abrisojiffy.com)